

Olympian Plus plug in design controls increase of downstream pressure on start up. Cylinders and other air operated devices are eased into normal operating positions, reducing the possibility of equipment damage and hazards to the user.

3 port/2 position, normally closed, soft start valve with optional manual lockout slide

Blocks inlet air and exhausts downstream air when pilot signal is removed or when the optional manual lockout slide is closed

Optional manual slide can be padlocked in closed position

Solenoid pilot or air pilot operation

Designed primarily for use in start-up and shutdown of equipment, not as a frequently cycling directional control valve. We offer a wide variety of valves designed for frequent cycling and other applications.



Technical data

Fluid:

Compressed air, neutral gases

NOTE: Contact technical support for use with other media.

Maximum pressure solenoid operated:

Dependent on solenoid rating
[must not exceed 150 psig (10 bar)]

Max. pressure pilot operated:

250 psig (17 bar) max.

Minimum operating pressure:
44 psig (3 bar)

Operating temperature solenoid operated:

[must be within range
0°* to 125°F
(-20°* to 50°C)]

Operating temp. pilot operated:

0°* to 175°F (-20°* to 80°C)
* Air supply must be dry enough to avoid ice formation at temperatures below 35°F (2°C).

Materials


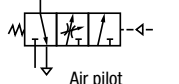
P64F

Body: zinc alloy
Intermediate body and top plate: aluminum
Exhaust bonnet: zinc alloy
Yoke: zinc alloy
Elastomers: synthetic materials
Filter discs: sintered plastic
Internal components: brass/steel


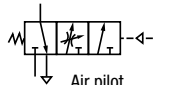
P68F

Body: aluminum
Top plate: aluminum
Bottom plate: aluminum
Yoke: aluminum
Elastomers: synthetic materials
Filter discs: sintered plastic
Internal components: brass/steel
Maximum Flow:
P64F = 120 scfm
P68F = 311 scfm

P64F Ordering information

ISO Symbols	Port Size	Solenoid pilot operated	Air pilot operated
 Solenoid operated	1/2"	P64F-2AC-PFN	P64F-2GA-NNN
	3/8"	P64F-3AC-PFN	
 Air pilot	1/2"	P64F-4AC-PFN	
	3/4"	P64F-6AC-PFN	

P68F Ordering information

ISO Symbols	Port Size	Solenoid pilot operated	Air pilot operated
 Solenoid operated	3/4"	P68F-6AH-NPN	P68F-6AB-NNN
	1"	P68F-8AH-NPN	P68F-8AB-NNN
 Air pilot	1-1/4"	P68F-AAH-NPN	P68F-AAB-NNN
	1-1/2"	P68F-BAH-NPN	P68F-BAB-NNN

Options selector

P6★F - ★★ - ★★

Series	Substitute
64	4
68	8
Port size	Substitute
1/4"	2
3/8"	3
1/2"	4
3/4"	6
1"	8
1-1/4"	A
1-1/2"	B
Threads	Substitute
PTF	A
ISO G parallel	G
No Yoke (N in 5th position)	N
ISO G pilot and exhaust ports	
No Yoke (N in 5th position)	A
PTF pilot and exhaust ports	
Operator	Substitute
Air pilot	A
Air pilot with manual lockout	B
22 mm miniature solenoid	C
22 mm miniature solenoid with manual lockout	D
32 mm solenoid	G**
32 mm solenoid with manual lockout	H**
CNOMO solenoid	L
CNOMO solenoid with manual lockout	M

* 64 series only ** 68 series only

Connectors	Substitute	
3 pin plug with cable grip, no indicator	A	
Without	N	
P64F/P68F (22 mm solenoid)		
Coil voltage	Nominal power rating	Substitute
24 V d.c.	2 W	F
110/120 V, 50/60 Hz	4/2.5 V A	A
No solenoid	-	N
P68F (32 mm solenoid)		
Coil voltage	Nominal power rating	Substitute
24 V d.c.	4.5 W	P
110/120 V, 50/60 Hz	14/10 VA	J
No solenoid	-	N
No coil		Z
Solenoid manual operator		Substitute
Shrouded push button		P
None		N

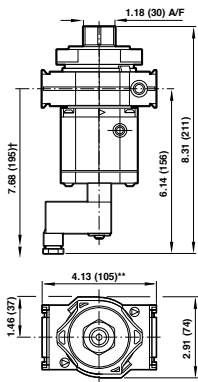
Accessories

	Size	Bracket kit	Bracket kit	3/2 Shut-off valve	Manual shut-off with lockout	Single yoke	Double yoke	Exhaust port silencer	Connector plug with cable gland		
P64F	1/4"	74504-50	—	T64E-2AB-P1N	—	Y64A-2AA-N1N	Y64A-2AA-N2N	MB004A	Indicator type	No Indicator	
	3/8"	74504-50	—	T64E-3AB-P1N	Factory fit option only.	Y64A-3AA-N1N	Y64A-3AA-N2N	MB004A	54934-02	110/120 V a.c.	Indicator type
	1/2"	74504-50	—	T64E-4AB-P1N	See Options selector	Y64A-4AA-N1N	Y64A-4AA-N2N	MB004A	54934-01	—	No indicator
	3/4"	74504-50	—	T64E-6AB-P1N	—	Y64A-6AA-N1N	Y64A-6AA-N2N	MB004A	—	—	—
P68F	3/4"	—	18-001-979	T68E-6AB-B2N	Standard	Y68A-6AN-N1N	Y68A-6AN-N2N	MB008A	54934-08*	10-50 V a.c./d.c.	Indicator type
	1"	—	18-001-979	T68E-8AB-B2N	Standard	Y68A-8AN-N1N	Y68A-8AN-N2N	MB008A	54934-02	110/120 V a.c.	Indicator type
	1-1/4"	—	18-001-978	T68E-AAB-B2N	Standard	Y68A-AAN-N1N	Y68A-AAN-N2N	MB008A	54934-01	—	No indicator
	1-1/2"	—	—	T68E-BAB-B2N	Standard	Y68A-BAN-N1N	Y68A-BAN-N2N	MB008A	—	—	—

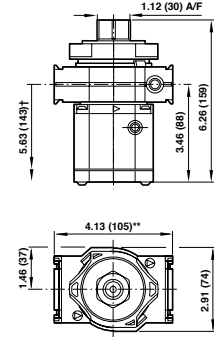
* Reduced light intensity at 12 V.

P64F

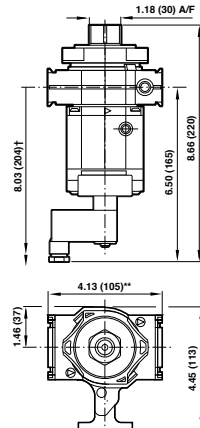
Solenoid operated



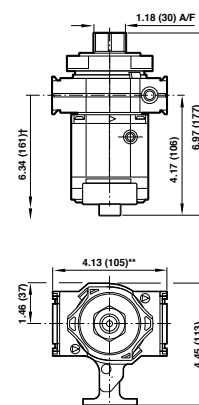
Air pilot operated



Solenoid operated plus manual shut-off with lockout

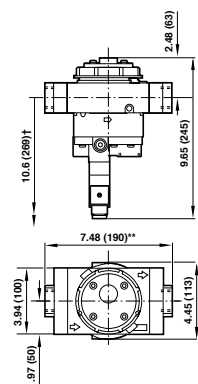


Air pilot operated plus manual shut-off with lockout

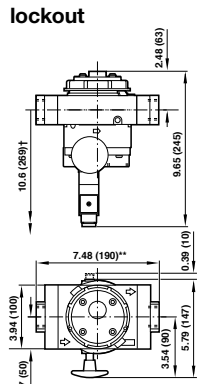


P68F

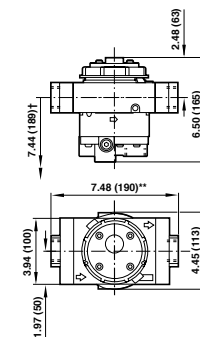
Solenoid operated



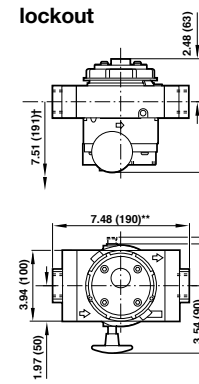
Solenoid operated plus manual shut-off with lockout



Air pilot operated



Air pilot operated plus manual shut-off with lockout



** 7.87" (200 mm) for 1-1/4, 1-1/2 models.
† Minimum clearance required to remove unit.

Dimensions in inches (mm)

Typical Performance Characteristics

